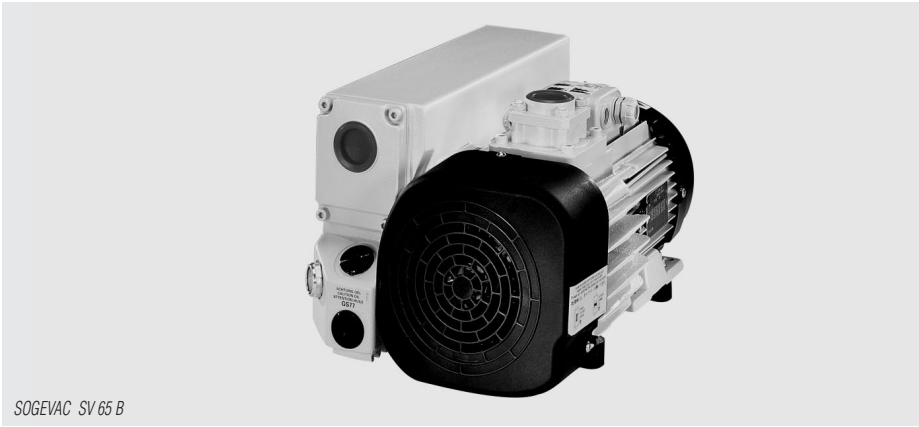
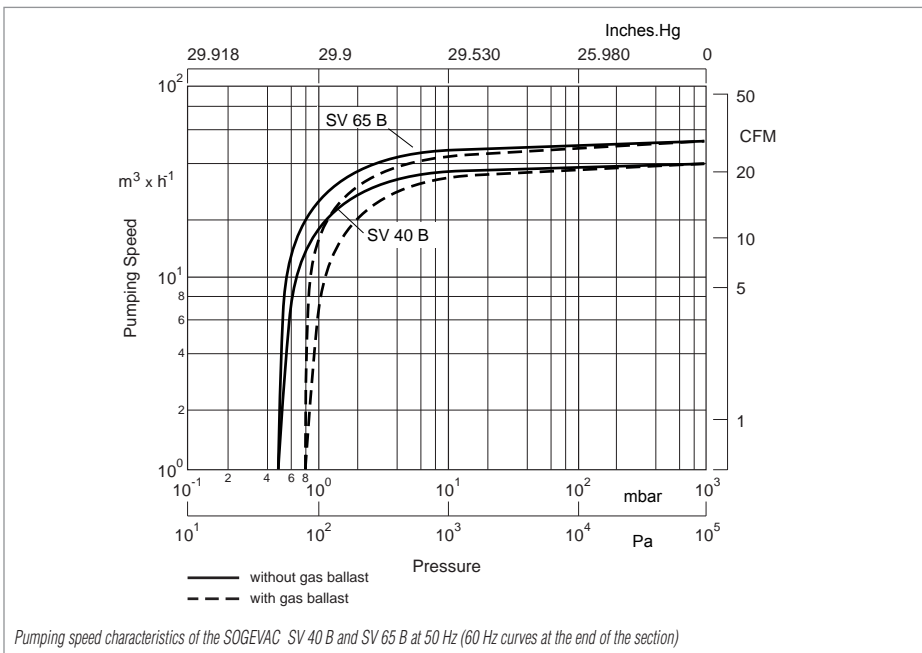
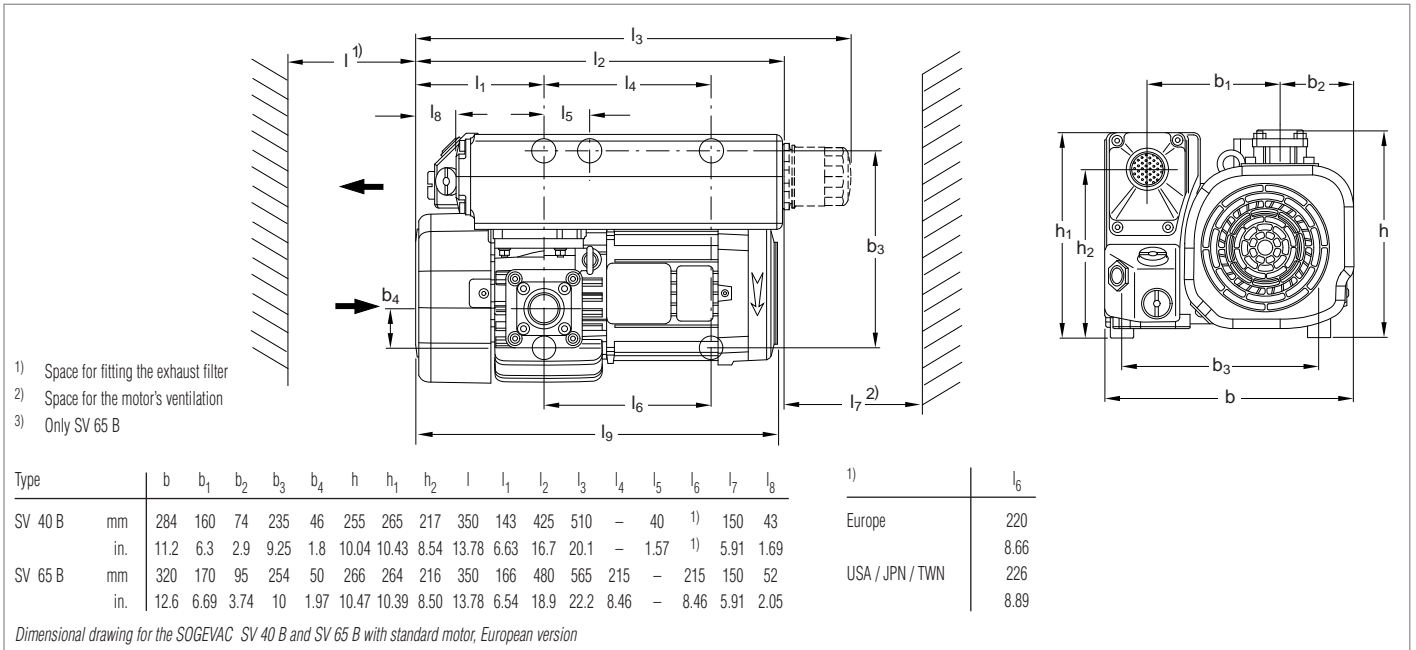


SOGEVAC SV 40 B/SV 65 B



SOGEVAC SV 65 B



Technical Data		SOGEVAC SV 40 B		SOGEVAC SV 65 B	
		50 Hz	60 Hz	50 Hz	60 Hz
Nominal speed ¹⁾	m ³ x h ⁻¹ (cfm)	44 (25.9)	53 (31.2)	59 (34.8)	71 (41.8)
Pumping speed ¹⁾	m ³ x h ⁻¹ (cfm)	38.5 (22.7)	47 (27.7)	54 (31.8)	64 (37.7)
Ultimate partial pressure without gas ballast ¹⁾	mbar (Torr)	≤ 0.5 (≤ 0.4)		≤ 0.5 (≤ 0.4)	
Ultimate total pressure	with standard gasballast ¹⁾	≤ 1.5 (≤ 1.1)		≤ 1.5 (≤ 1.1)	
	with small gasballast ²⁾	≤ 0.8 (≤ 0.6)		≤ 0.8 (≤ 0.6)	
Water vapor tolerance	with standard gasballast ¹⁾	30 (22.5)		30 (22.5)	
	with small gasballast	10 (7.5)		10 (7.5)	
Water vapor capacity, max.	with standard gasballast	0.76 (0.80)	0.90 (0.95)	1.0 (1.1)	1.25 (1.32)
	with small gasballast	0.28 (0.30)	0.34 (0.36)	0.36 (0.38)	0.42 (0.44)
Oil capacity	l (qt)	1.0 (1.05)		2.0 (2.1)	
Mean noise level ³⁾	dB(A)	60	63	60	64
Admissible ambient temperature	°C (°F)	12 to 40 (54 to 104)		12 to 40 (54 to 104)	
Motor power	kW (hp)	1.1 (1.5)	1.5 (2.0)	1.5 (2.0)	1.8 (2.5)
Nominal speed	min ⁻¹ (rpm)	1500 (v)	1800 (1800)	1500 (1500)	1800 (1800)
Type of protection	IP	55-F		55-F	
Weight (with oil filling)	kg (lbs)	43 (94.9)	45 (99.3)	49 (108.2)	52 (114.8)
Dimensions (W x H x D)	Eur	425 x 284 x 265 (16.7 x 11.2 x 10.4)		480 x 320 x 264 (18.9 x 12.6 x 10.4)	
	USA / JPN / TWN	455 x 284 x 265 (16.7 x 11.2 x 10.4)		480 x 320 x 264 (18.9 x 12.6 x 10.4)	
Connections	intake	1 1/4"	1 1/4"	1 1/4"	1 1/4"
	exhaust	1 1/4"	1 1/4"	1 1/4"	1 1/4"

¹⁾ To DIN 28 400 and following numbers

²⁾ Ordering Information see Section "Accessories"

³⁾ Operated at the ultimate pressure without gas ballast, free-field measurement at a distance of 1 m

⁴⁾ IEC-Motor (Europa) 50/60 Hz in IP 55, NEMA-Motor in TEFC

⁵⁾ European and Japanese pumps have BSP, North and South American versions have NPT

Technical description see Section "General"

Ordering Information	SOGEVAC SV 40 B		SOGEVAC SV 65 B	
	50 Hz	60 Hz	50 Hz	60 Hz
SOGEVAC SV 40 B/SV 65 B ¹⁾ with three-phase motor, without gasballast, without oilfilter 230/400 V, 50 Hz and 460 V, 60 Hz (CEI) 230/460 V, 60 Hz and 400 V, 50 Hz (CEI) 230/400 V, 50/60 Hz (CEI) 200 V, 50/60 Hz	Part No. 960 300 – – –		Part No. 960 400 – – –	
with three-phase motor, without gasballast, with oilfilter 230/400 V, 50 Hz and 460 V, 60 Hz (CEI) 230/460 V, 60 Hz and 400 V, 50 Hz (CEI) 230/400 V, 50/60 Hz (CEI) 200 V, 50/60 Hz	Part No. 960 302 – – –		Part No. 960 402 – – –	
with three-phase motor, with small gasballast, without oilfilter 230/400 V, 50 Hz and 460 V, 60 Hz (CEI) 230/460 V, 60 Hz and 400 V, 50 Hz (CEI) 230/400 V, 50/60 Hz (CEI) 200 V, 50/60 Hz	Part No. 960 301 Part No. 960 311 Part No. 960 321 Part No. 960 316		Part No. 960 401 Part No. 960 411 Part No. 960 421 Part No. 960 416	
with three-phase motor, with small gasballast, with oilfilter 230/400 V, 50 Hz and 460 V, 60 Hz (CEI) 230/460 V, 60 Hz and 400 V, 50 Hz (CEI) 230/400 V, 50/60 Hz (CEI) 200 V, 50/60 Hz	Part No. 960 303 Part No. 960 313 Part No. 960 323 Part No. 960 316		Part No. 960 403 Part No. 960 413 Part No. 960 423 Part No. 960 418	
with three-phase motor, with standard gasballast, without oilfilter 230/400 V, 50 Hz and 460 V, 60 Hz (CEI) 230/460 V, 60 Hz and 400 V, 50 Hz (CEI) 230/400 V, 50/60 Hz (CEI) 200 V, 50/60 Hz	Part No. 960 305 Part No. 960 312 Part No. 960 322 Part No. 960 317		Part No. 960 405 Part No. 960 412 Part No. 960 422 Part No. 960 417	
with three-phase motor, with standard gasballast, with oilfilter 230/400 V, 50 Hz and 460 V, 60 Hz (CEI) 230/460 V, 60 Hz and 400 V, 50 Hz (CEI) 230/400 V, 50/60 Hz (CEI) 200 V, 50/60 Hz	Part No. 960 307 Part No. 960 314 Part No. 960 324 Part No. 960 319		Part No. 960 407 Part No. 960 414 Part No. 960 424 Part No. 960 419	
Other voltages/frequencies ²⁾ Filling with special oil ²⁾	upon request upon request		upon request upon request	
Accessories	upon request		upon request	
Spare parts	upon request		upon request	

¹⁾ European and Japanese pumps have BSP, North and South American versions have NPT

²⁾ Please indicate when ordering a pump