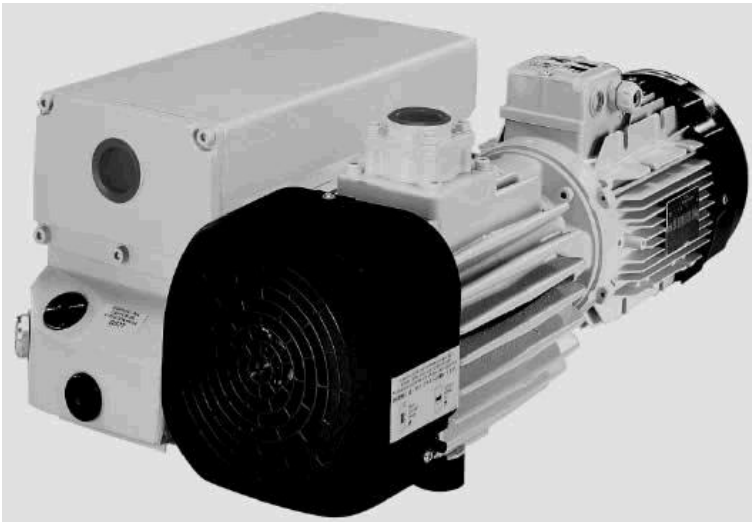


## Product-Information

### **SOGEVAC SV 100 B**

Rotary Vane Vacuum Pump  
SOGEVAC



#### **Product Range, Features and Design**

Oil sealed rotary vane vacuum pumps are being used in all areas of vacuum engineering. They are equally suited for both industrial production and research applications. They may be used to generate a rough and medium vacuum or as backing pumps in pump combinations with Roots pumps or high vacuum pumps. By design, rotary vane pumps run quietly and do not produce much noise.

#### **Application Examples**

- Car industry
- Food industry
- Furnaces and plants
- Laser technology
- Medicinal technology
- Metallurgy
- Power engineering, long-distance energy
- Space simulation
- Vacuum coating

#### **Advantages to the User**

- Continuous operation from atmospheric pressure to ultimate pressure
- High pumping speed also at low pressures

## Product-Illustration

## Product-Description

## Product-Information

### **SOGEVAC SV 100 B**

Rotary Vane Vacuum Pump  
SOGEVAC

- Low noise level
- Low vibrations
- Integrated exhaust filter, up to 99.9% efficient
- No oil loss owing to the integrated oil return line
- Exhaust gas free of oil mists
- Efficient air cooling (standard)
- Water cooling (optional)
- Low space requirement, easy to install
- Rugged
- Maintenance-friendly
- Compact design
- For direct fitting to Roots pumps from SV 100 B or SV 100 up
- Optimum size-to-performance ratio
- High water vapor tolerance
- For use in various applications
- Wide range of accessories available for adaptation to differing problems

#### **Compact Design**

The pumps have been so designed that efficiency of the pumps will be high.

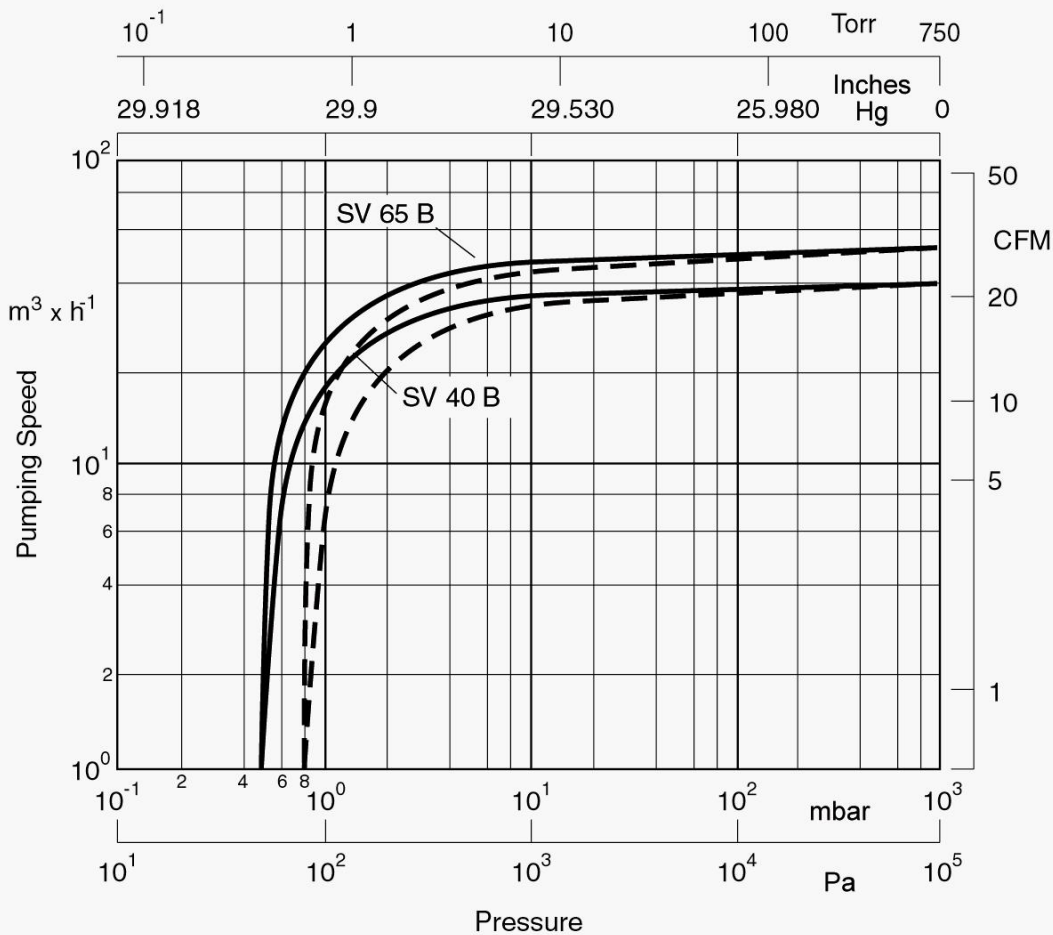
#### **Supplied Equipment**

All pumps are delivered with the required quantity of oil: SV 10 B to SV 65 (B) in a separate canister, whereas the SV 100 (B) and larger pumps already contain the oil and are thus ready for operation.

Product-Information  
**SOGEVAC SV 100 B**  
 Rotary Vane Vacuum Pump  
 SOGEVAC

Illustrations

## Pumping speed characteristics at 50 Hz

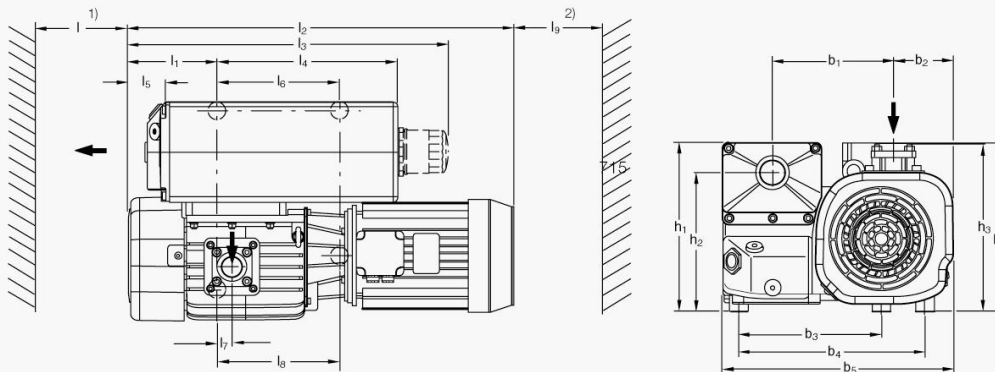


— without gas ballast  
 - - - with small gasballast

**Product-Information**  
**SOGEVAC SV 100 B**  
 Rotary Vane Vacuum Pump  
 SOGEVAC

Illustrations

Dimensional drawing



- 1) Space for fitting the exhaust filter and cooling
- 2) Space for the motor's ventilation

all dimensions in mm

Type	b <sub>1</sub>	b <sub>2</sub>	b <sub>3</sub>	b <sub>4</sub>	b <sub>5</sub>	h <sub>1</sub>	h <sub>2</sub>	h <sub>3</sub>	h <sub>4</sub>
SV 100 B mm	209	95	258	320	400	271	220	271	<sup>3)</sup>
in.	8.23	3.74	10.16	12.60	15.75	10.67	8.66	10.67	<sup>3)</sup>

Type	l	l <sub>1</sub>	l <sub>2</sub>	l <sub>3</sub>	l <sub>4</sub>	l <sub>5</sub>	l <sub>6</sub>	l <sub>7</sub>	l <sub>8</sub>	l <sub>9</sub>
SV 100 B mm	350	160	<sup>3)</sup>	590	330	53	225	27	225	150
in.	13.78	6.30	<sup>3)</sup>	23.23	12.99	2.09	8.86	1.06	8.86	5.91

<sup>3)</sup>		h <sub>4</sub>	l <sub>2</sub>
Europe	mm	270	695
	in.	10.63	27.36
USA	mm	290	755
	in.	11.42	29.72
JPN / TWN	mm	275	715
	in.	10.83	